

# PRODUCT OVERVIEW

Waste Water

Mining

Food & Beverage

Breweries

**Elite**  
Valve Canada

## Warranty

Elite Valve Canada warrants its products against manufacturing defect or failure as a result of manufacturing defect for a period of one year from the date of purchase.

This warranty is limited to the performance of the valve and its components, include actuators, where assembled by Elite Valve Canada. We reserve the right to repair, replace or refund the purchaser for those components at it discretion provided there has been no modifications has been made to the components or the assembly. Furthermore, the warranty is limited to the components in question and does not cover any damages either directly or indirectly to the system

Elite Valve Canada's warranty is void, if if any modification is made to the assembly, and thereby releases Elite Valve, there agents and employee's from obligation.

Ball, Butterfly, Knife Gate Valves  
and Actuation Accessories



Distributed By

**Elite**  
Valve Canada

Elite Valves Canada  
Sarnia, Ontario  
Ph. 519 332 8809  
Fax 519 337 7933  
[www.elitevalve.com](http://www.elitevalve.com)

Pulp & Paper



BULLETIN : 0709

## Series E1500

- Size 1/4 to 3"
- 316 Stainless steel body & ball
- Full port
- Body rating 1000 WOG
- RPTFE seats standard (other available)
- Teflon packing
- Safety Locking Lever



## Series E3100

- Sizes: 1/4" to 2"
- 316 SS Body & Ball construction
- Full port design
- Reinforce teflon seats ( RPTFE)
- NPT, socket weld or butt weld
- Body rating 1000 WOG
- Locking level standard



## Series E3200 *Excaliber*

- Steam rated design
- Size Range : 1/4"-2"
- 3 piece ball valves, reduced bore,
- Packing: Graphoil
- Body Rating: 2000/1500 psi WOG
- Max Temp: 450F
- Threaded, butt weld or Socket weld
- Standard Seat, 50% SS & PTFE
- Body Materials : 316 stainless steel  
A105 Carbon Steel



## Series E9100

- sizes 1/2" to 4"
- Reduced port unibody design
- 316ss and carbon steel (WCB)
- 150# and 300# ANSI flanges
- ISO 5211 mounting pads
- Standard RPTFE Teflon seats  
option seat material available



## Series E9200

- Sizes: 1/2" to 12"
- Full Port Design,
- 150# & 300# ANSI flanges
- 316 SS and carbon steel
- ISO 5111 Mounting pads
- RPTFE seats standard (other available)
- Teflon and graphoil packing available
- Lever up to 6", Optional gear to 12"



## Our Vision

Elite Valve Canada is committed to being a global leader, developing products & manufacturing technology that will offer a new level of acceptance. We recognize that all applications are not the same and as our client's processes change, so should the valving technology they use.

As an ISO 9000 company, our vision is to continue to develop manufacturing technology centers, while expanding our manufacturing partnerships on global bases.

In support of our advance growth, Elite Valve Canada has strategically located manufacturing & service centers within North America offering improved support & service.

Our engineers are rewarded for innovative thinking, turning problems into opportunities, while advancing product performance. Working closely with our customers is not an inconvenience, but rather encouraged providing exposure to life's proving ground.

Our concept is simple, strive to be the very best possible! With these few words, we employ years of experience, hand crafting some of the best valves technology can offer.

Our ability to provide both standardized and custom-engineered solutions allows us to meet the critical needs of customers for each application.

## The Future

Our commitment to future growth is understood, but equally important is our commitment to the environment! As an integrated part of our growth, we have adopted machining techniques that conserve energy while producing less waste and recycling of materials.

Elite Valve Canada, your committed partner for the future!



## Positioners

### E315 Pneumatic Positioner

- 3-15 PSI input
- Nema 4x Enclosure
- Visual indicator
- Namur mounting
- Direct Drive



### E420 Analog Positioner

- 4-20 ma input
- Nema 4x Enclosure
- Visual indicator
- Namur mounting
- Direct Drive

## Limit Switches

### EMS-850 mechanical limit switch

- 2 mechanical contact switches
- Large junction terminal with 2 spares
- (2) 3/4" NPT conduit entries
- Direct drive, Namur connection
- Lexan visual indicator for both
- Open & Closed positions
- Color coded beacon- Yellow & Red
- CSA & FM approvals - General purpose
- SS ISO brackets



### EPS-850 Proximity limit switch

- 2 Hermetically Sealed contact switches
- Large junction terminal with 2 spares
- (2) 3/4" NPT conduit entries
- Direct drive, Namur connection
- Lexan visual indicator for both
- Open & Closed positions
- Color coded beacon- Yellow & Red
- CSA & FM approvals - General purpose
- SS ISO brackets

### EMS



### EPS



## Diverting, Mixing or Blending

### Series E3300



- Sizes 1/4" to 2"
- 3 way threaded stainless steel, standard bore ball design
- Porting S/S (L-&-T Port)
- CF8M (316SS) Stainless Steel
- 1000PSI 1/4"-1 1/2", 2", 800PSI
- Temp range: 60 to 400 deg.F.

- Size: 1/2" to 6" full port ball,
- 3 Way flange L or T port designs
- ANSI 150 # trunnion design
- 316SS or WCB
- ISO-5211 mounting flange
- Working pressure 150 PSIG
- Operating Temperature: 60 to 400 deg. F -
- Standard RPTFE 4 seat design
- Lockable Lever design



### Series E9300

## Tilting Check Valve

Elite Valve offers two design option for the E4400 series tilt check valve. Either as the wafer version, that sandwiches between to ANSI 150 lbs flanges. Or as the fully assembly, flange version, that comes complete with fabricated reducing cones.

### E4400 Series



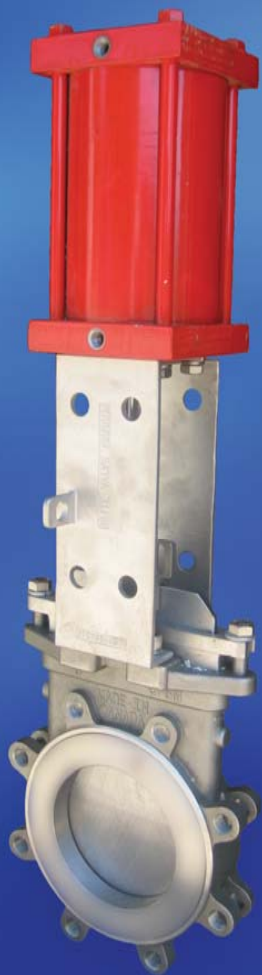
- Standard ASME (ANSI) 150 class design
- Material
- 316ss
  - 317ss
  - 254smo
  - Titanium
  - CD4 MCU
  - Other alloys



Optional check valve assembly

## E5700 Series Investment Knife Gate

Designed for Optimum Performance, Repairability and Reliability



### Features

- Sizes 2" to 14"
- Investment Cast 150# flange lug body
- 316 stainless body and gate standard
- Bi-directional seating with guide pins located 360 degrees around the port
- large gland and lantern area for improved packing
- Robust investment cast yoke assembly with direct mount cylinder flange
- Self flushing seat
- suited for liquids or slurry applications

### Optional Features

- Seat materials include metal, RC50 ( 50C Rockwell ) PTFE, Urethane, Viton & EPDM
- V Port gates
  - Gland Purge ports
  - Lockable gate design
  - Pneumatic and hydraulic cylinder
  - Fully bonneted top works
  - High alloys, including 317SS, 904L 254SMO, Alloy 20, Titanium, Hastelloy, Inconel, and other materials



### Target Switch

The investment cast yoke of the E5700 series knife gate allows for direct mounting of target sensors to sensor gate position.

The investment cast clevis has an adjustable travel for precise position of the magnetic target.



### Safety Lockout

One of the many features of the new investment cast yoke design, is the robust mechanical safety lockout system.

This design provides a positive lockout of the gate in either the open or closed positions. This allows for a hardened pin, which passes through the gate clevis, and is sandwiched between the yoke supports.

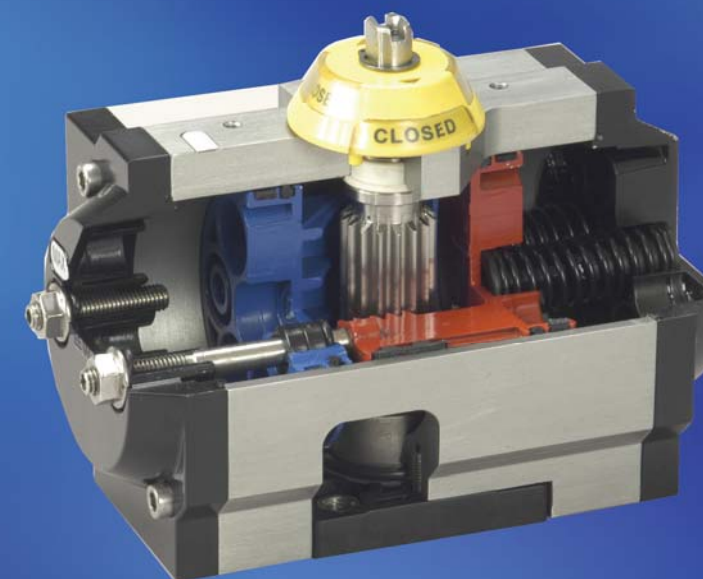


## Pneumatic

### Features

- Maximum Torques Sizes to 18,000 in/lbs
- Harden rack and pinion
- Double travel stop
- Captured Spring cartridge for safety
- ISO 5211 & Namur mounting
- Built in visual indicator
- ISO double square input drive
- Easily convert from double acting to spring return

Die-cast aluminum end caps are epoxy powder for corrosion resistance, max torque output. The springs are manufactured high strength carbon steel and coated for corrosion resistance. Spring guides are also corrosion resistant for long life. These actuators have had proven cycle life rated to one million cycles.



## Actuator Mounting Brackets

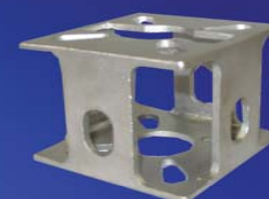
Stamped ISO 5211

- Mounting Bracket
- Sizes FO5 to F12
- 304 S/S construction



Safety Lockout Bracket

Manufactured as an investment cast bracket, it incorporates the ability to lock the valve in open or closed positions.



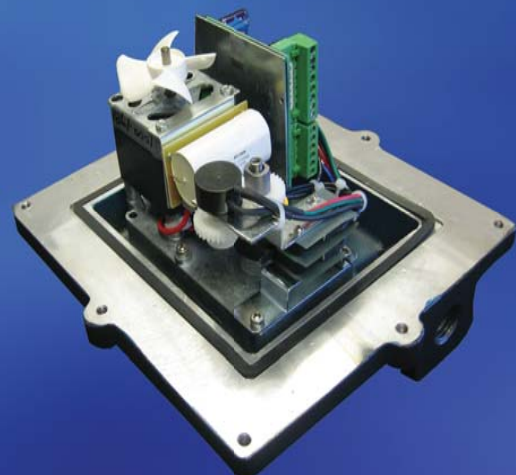
## Electric Actuators

This series actuators are equipped with hardened steel spur gears guaranteeing high efficiency; quiet operation and long trouble free life putting out up to 27 300 in/lbs max torque.

The heavy-duty sand-cast aluminum enclosure meets NEMA specifications and has a thermally bonded ultraviolet resistant polyester powder coating that not only enhances its appearance but is also a tough corrosion resistant coating.



- Features: NEMA 4 & ratings
- Large easy to wire terminals ( all labeled)
  - ISO 5211 direct mount design housing
  - All stainless steel fastner,
  - Optional, internal brakes, Timers, Heaters



## Cylinders



- Features
- Linear Actuator
  - Body Material: Steel and Carbon Fiber Barrels
  - U cup and O ring used for added security.
  - Bushing: Bronze SAE 660
    - Finish: Epoxy Coated
    - Large Ports
    - Stroke up to 48"
    - Bores from 5" to 24" diameter



HIGH ALLOY



Elite Valve Canada Offers Several options to better suit your needs. We offer High Alloys and Bonneted options.



BONNET OPTIONS

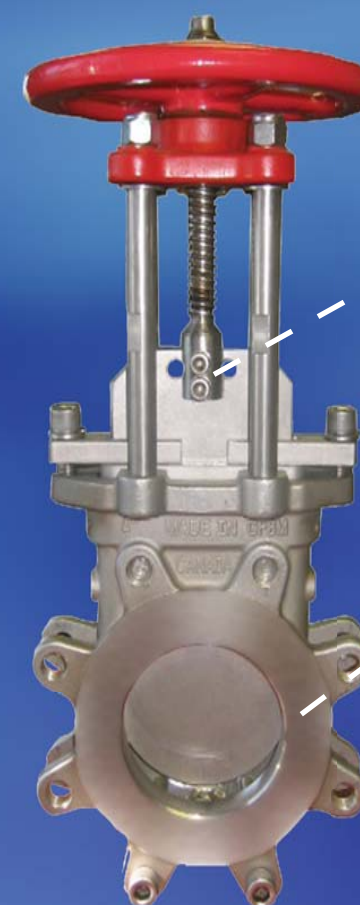
## E5500 Series Investment Knife Gate

North American Quality with a compeitive design for process fluids, This valve is an excellent choice for less demanding service, when repairability is not a concern.

### Features

- Sizes 2" to 42"
- 150# flange lug body
- investment cast to 12", sand cast to 42"
- 316 stainless body and gate standard
- Uni-directional seating,
- Braided PTFE filliment packing
- Metal or resilient seating
- Robust stanchion investment cast yoke or a investment cast yokes.
- All s/s fastener double start bronze bushing
- Two bolt stem connection.

Manual hand wheel or pneumatic cylinder which can be mounted directly



## Series E8500 & E8400

### Features

- Sizes: 2- 24"
- Face to Face Dimensions: ISO 5752/5
- ISO 5211 Direct Mounting
- Flange Dimensions: ANSI 150
- Body Material: Ductile Iron
- Disc: CF8M (SS 316), Pinned Disc Design
- Seat/Liner: EPDM, Buna N or Teflon coated EPDM
- Direct Mounting or Bracket Adapter Option
- Standard 10 position Locking lever
- Pressure Rating: 150 PSIG
- Operator: Lever, gear, & electric & Pneumatic



## AWWA C504 Butterfly Valve

- Sizes 2" to 36" Sises
- Body ductile iron ASTM A-126 class B
- Epoxy coated finish standard
- 150# flange, full face design
- Disc cast iron with S/S rib with torque bolt design, or optional 316 SS disc
- Seat buna EPDM, ( Viton & Buna available)
- shaft ASTM A-276 304 stainless steel
- Rubber line body per AWWA C504
- Optional all 316 S/S disc available
- Power coated epoxy finish

### Options Include:

- Stem Extension
- Platform Operators
- Square Drive nuts



## 3way Diverting Butterfly Valve

### Features:

- Stainless Steel hardware
- Single actuation
- Designed for washer industries



## E4000

## Three Piece V-Flow Ball Valve



The V-Ball Flow Control valve is available in several configurations to suit your flow requirements. Smooth linear flow can be achieved by position the value from 0 to 90 deg. of open.

This valve is an excellent choice where precise control os required for blending, mixing or metering.

### Features

- Investment cast components
- 1000 PSI WOG rated body
- 3 peice swing out design
- 316SS & WCB (A105) body materials
- 50% SS & PTFE seats standard
- PTFE & Graphoil packings
- optional 30 & 60 degee V porting
- Blow out proof stem design
- ISO 5211 Direct Mounting

## Flange V-Ball

1/2 TO 6" SIZE

### Features

- Investment cast components
- ANSI 150 lbs. class body
- 316SS & WCB (A105) body materials
- 50% SS & PTFE seats standard
- PTFE & Graphoil packings
- optional 30, 45 & 60 degee V porting
- Blow out proof stem design
- ISO 5211 Direct Mounting

The E4000 series flanged V ball, is availalble in ANSI 150LBs design, in 316SS, and other alloys. Similar to the threaded design, the segmented balls, are available in standard 30, 45, & 60 Deg orffices. The control can be enhanced further, for even finer control when used in conjunction with E420 Electro-pnuematic positioner.

This arrangment, offer excellent control, and performance to suite most aplications that include clean process fluids, waters, & condensate, and some fiberous applications.

The standard seat material, 50%SS & PTFE offers excellent performance for applications below 450F.

