

Warranty & Performance

Elite Valve Canada warrants its products against manufacturing defect or failure as a result of a manufacturing defect for a period of one year from date of purchase.

This warranty is limited to the performance of the valve and Elite Valve components, including actuators, where assembled by Elite Valve Canada. Elite Valve Canada, will repair, replace or refund the purchaser for those components at its discretion provided that no modification or alternation has been made to the components. Furthermore, the warranty is limited to the components in question, and does not cover any damages either directly or indirectly to the system which is mounted.

Elite Valve Canada's warranty is void, if any modification is made to the components, and thereby releases Elite Valve, its agents, and employees from obligations.



E9200 Stainless Steel Ball Valve



FULL PORTED BALL VALVES

Excellent for full flow applications looking for automation & isolation of process fluids. When combined with our automation packing, provide service control performance for food and general chemical industrial applications.

High quality investment casting body and caps.

END CONNECTIONS: ANSI 150# & 300# Flange

MATERIAL:

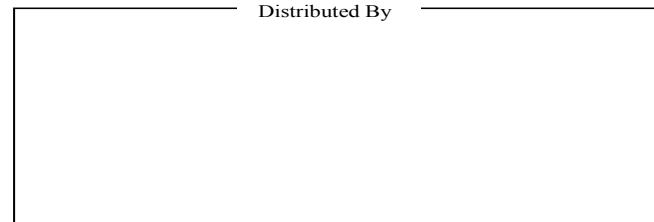
Body: 316 Stainless Steel (ASTM A351-CF8M) & WCB Carbon steel body

Ball: 316 Stainless Steel (ASTM A351-CF8M)

Temperature Range: -60 to 450 Degrees F
15% Reinforced Glass-fiber / Teflon seats

Elite Valve Canada
Ontario, Canada
Ph: 519-332-8809
Fax: 519-337-7933
www.elitevalve.com

Distributed By



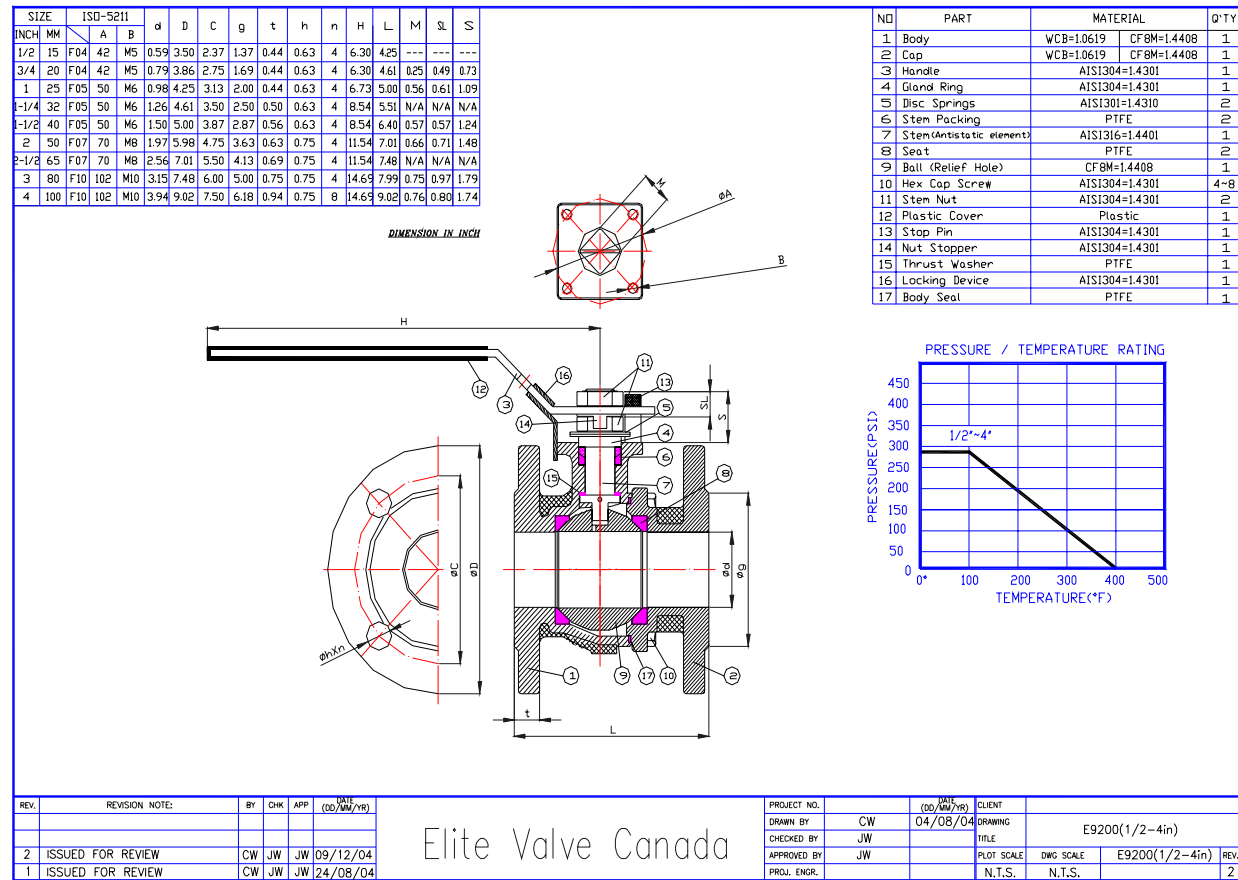
Ball Valves

Knife Gate Valves

Actuators

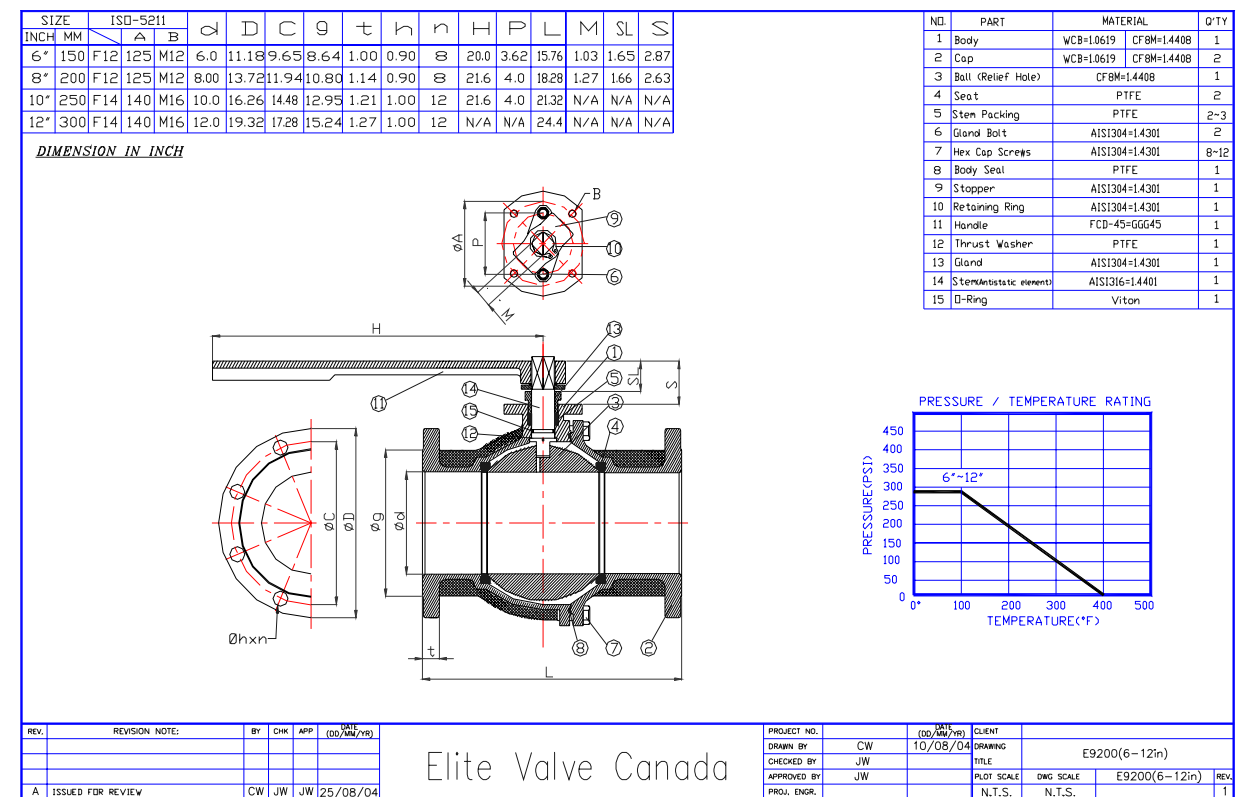


www.elitevalve.com



Size	GPM @ 1PSI
1/2"	19
3/4"	37
1"	50
1 1/2"	270
2"	480
3"	1300
4"	2300
6"	5400
8"	10,000
10"	16,000
12"	24,000

Size	Break/Seating
1/2"	132 in/lbs
3/4"	162 in/lbs
1"	167 in/lbs
1 1/2"	518 in/lbs
2"	633 in/lbs
3"	1465 in/lbs
4"	1850 in/lbs
6"	3696 in/lbs
8"	4092 in/lbs
10"	5280 in/lbs
12"	5940 in/lbs



Model/ Description Availability						
Model	Body Mat'l	Ball Mat'l	Seat Option	Packing	End Connection	Size
E9200	Table B	Table C	Table D	Table E	Table F	Table G
Table B		Table C		Table F		Table G
316SS		31		ANSI 150#		15
WCB		62		ANSI 300#		30
Other		XX		Other		XX
Table C		Table D		Table E		
316 SS		3		PTFE		T
Other		X		Graphoil		G
Table D		Table E		Other		XX
PTFE		P				
RPTFE		R				
OTHER		X				