

FLOW CONTROL

E4000M V PORT BALL VALVE



**1/4"–3"
Three Piece
V-Flow
Ball Valve**

Features:

Investment Cast Components
Blow-out-proof stem design
ISO 5211 Direct mounting of actuators to valves design

Standard Compliance:

ASME B 16.34 API 598
ANSI B 16.25 ANSI B 16.11

Specifications:

V-Bore: 60°V/45°V/30°V/
Slotted
End connection: Threaded /
Socket Weld / Butt weld
Working Pressure: 1/4"–2"
1000 psi /(CWP)
2- 1/2"~3" 800 psi /(CWP)
Pressure test according to
API 598

Elite V-flow have equal percentage flow characteristics, while the slotted balls have linear flow characteristics. As the ball rotates, desired flow rates can be achieved by positioning the ball anywhere between 0° and 90°. This provides high flow capacity and outstanding repeatability in manufacturing processes. These valves also feature characteristics balls including V or slotted either manual or automated.

TEMPERATURE & PRODUCT MIXING CONTROL

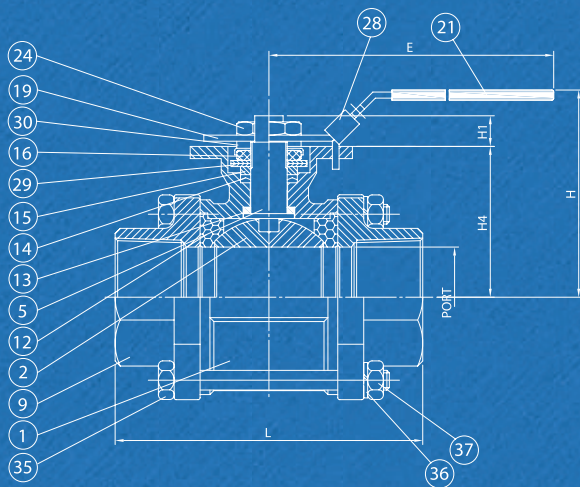
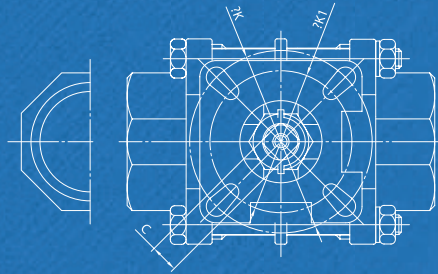
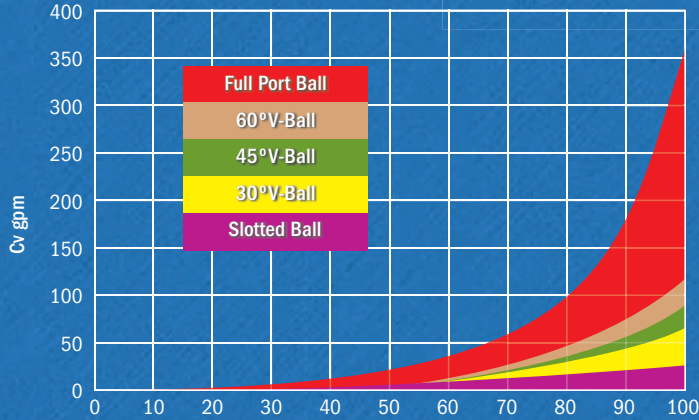
The temperature and product mixing control because of their quick responses to process controllers' signals and the precision to which they can control flow. Their accuracy at low and high flow demands enhance their effectiveness.

Elite
Valve Canada

E 4000-MV

1/4" ~ 3"
3 Piece
V - Flow
Ball Valve

MODEL/PRODUCT AVAILABILITY											
MODEL	BODY MAT'L		BALL MAT'L		SEAT MAT'L		PACKING		SPECIAL OPTIONS		SIZE
MV4000	316SS	S	316SS	S	15% RPTFE	R	TEFLON	T	30 Degree V	30	See Dimensions table below
	A216 WCB	W			PTFE	T	GRAPHOIL	G	45 Degree V	45	
	OTHER	X			UHMW	H			60 Degree V	60	
					PEEK	P					
					CTFE Modified PTFE	C					



DIMENSIONS							mm
SIZE	L	E	H	H1	H4	C	
1/4"	55.0	112.0	73.0	8.5	37.0	9.0	
3/8"	60.0	112.0	73.0	8.5	37.0	9.0	
1/2"	75.0	112.0	73.0	8.5	37.0	9.0	
3/4"	80.0	112.0	80.8	8.5	45.0	9.0	
1"	90.0	136.0	90.5	11.4	53.5	11.0	
1-1/4"	110.0	185.0	98.7	11.4	59.0	11.0	
1-1/2"	120.0	197.9	115.3	14.0	74.8	14.0	
2"	140.0	197.9	124.0	13.7	83.5	14.0	
2-1/2"	185.0	264.0	155.0	18.0	108.8	17.0	
3"	205.0	264.0	208.5	18.0	118.3	17.0	

MATERIALS LIST			
NO.	PART NAME	MATERIAL	QTY
1	BODY	ASTM A351 Gr.CF8M	1
2	BALL	ASTM A351 Gr.CF8M	1
5	STEM	SS316	1
6	FOLLOWER	SS304	1
7	STEM PACKING	PTFE.	1 SET
9	END CAP	ASTM A351 Gr.CF8M	2
12	SEAT	PTFE.,RTFE.	2
13	THRUST WASHER	PTFE.	1
14	STEM PACKING	PTFE.	1 SET
15	GLAND BUSH	SS304	1
16	GLAND NUT	SS304	1
19	HANDLE	SS304	1
21	HANDLE COVER	PLASTIC	1
24	HANDLE NUT	SS304	1
28	LOCKING PAD	SS304	1
29	BELLEVILLE WASHER	SS301	2
30	TAB WASHER	SS304	1
35	BOLT	SS304	4-6
36	BOLT WASHER	SS304	4-6
37	BOLT NUT	SS304	4-6



Elite Valve Canada
Ontario, Canada
Ph: 519-332-8809
Fax: 519-337-7933
www.elitevalve.com