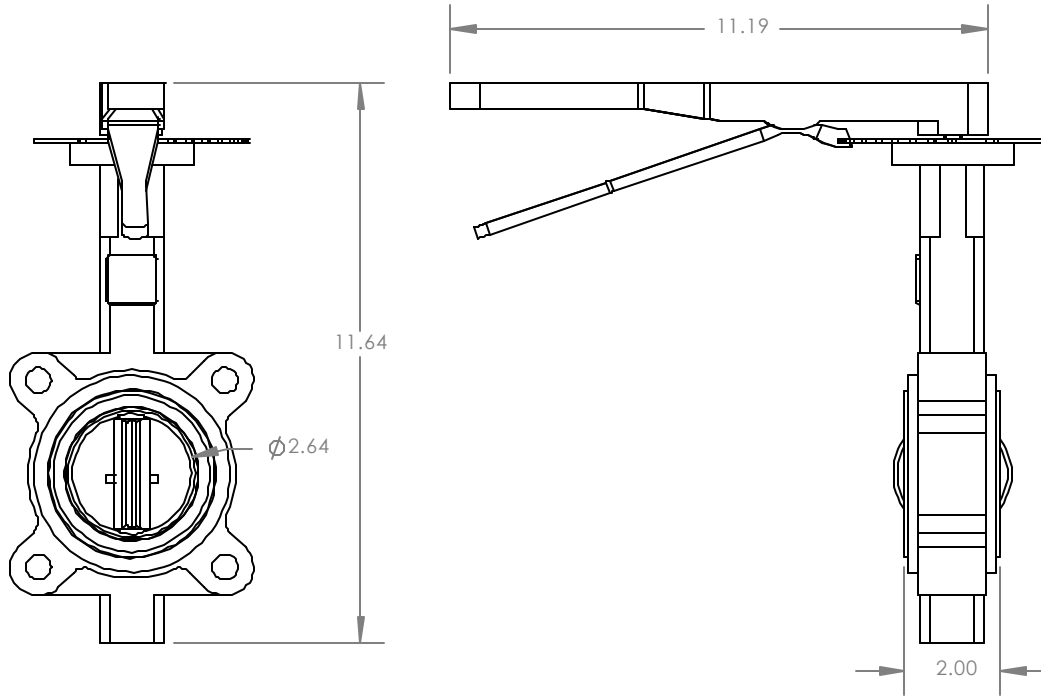


A B C D E F G H

| REVISIONS | | | |
|-----------|-------------|------|----------|
| REV. | DESCRIPTION | DATE | APPROVED |



PROPRIETARY AND CONFIDENTIAL
 THE INFORMATION CONTAINED IN THIS DRAWING IS THE SOLE PROPERTY OF ELITE VALVE CANADA. ANY REPRODUCTION IN PART OR AS A WHOLE WITHOUT THE WRITTEN PERMISSION OF ELITE VALVE CANADA IS PROHIBITED.

| | | | | |
|---------|------|---------------|-------------------------------|--------------|
| | NAME | DATE | DESCRIPTION: | DWG. NO. |
| DRAWN | JBW | JUNE 11, 2011 | E8500 2.5" BUTTERFLY VALVE | A42111118 |
| CHECKED | | | MATERIAL: DI BODY, 316SS DISC | WEIGHT: # |
| | | | CUSTOMER: | SHEET 1 OF 1 |
| | | | SUPPLIER: | SCALE:1:8 |
| | | | | REV: A1 |

A B C D E F G H